

CLAIRE TREVOR SCHOOL OF THE ARTS

# UCI *Arts*

2009-2010 SEASON



**UCI** *Arts*  
Claire Trevor School of the Arts



DANCE  
DRAMA  
MUSIC  
STUDIO  
ART  
BEALL  
CENTER

Dear Friends & Patrons,

As you know, our stages, concert halls and galleries are the research laboratories for our Arts students. Ticket purchases and donor support of our plays, concerts and art exhibitions have always been essential – and are even more significant now because of the ever-declining level of state funding.

We encourage you to support our Performance Endowment Fund so that our research and professional quality productions can continue. For details about how you can make a difference, please visit our web site at [www.arts.uci.edu/giving](http://www.arts.uci.edu/giving) or call Mia Martinez, Associate Director of Development, at (949) 824-0085.

On behalf of UC Irvine's Claire Trevor School of the Arts, I would like to thank you for your patronage and support of our talented students and faculty and the entertainment we have presented each season. We are very excited about the performances we have scheduled for 2009-10 and hope that you will find many dance, drama, music and studio art opportunities to your liking.

Sincerely,



Alan Terricciano  
Acting Dean  
Claire Trevor School of the Arts



# SPECIAL EVENTS

**September 18 - 20**

## **New Musical Theatre Festival**

*An alliance between the Claire Trevor School of the Arts Drama Department and the Academy for New Musical Theatre debuts with staged readings of two original musicals.*

### **e-Scape**

This powerful, gripping rock musical tells the story of bloodthirsty virtual world gamers who have invested in cyber real estate and pursue a 19-year-old computer programmer seeking money, revenge and someone to blame.

Winifred Smith Hall

Sept. 18 & 20 8:00 p.m.

Tickets: \$6 each or \$10 for both

### **Aging Out**

Through this deeply touching musical we follow the trials, tribulations and triumphs of young people who have spent their lives in the foster care system and are about to "graduate" into adult life with little emotional or financial support.

Winifred Smith Hall

Sept. 19 8:00 p.m. Sept. 20 5:00 p.m.

Tickets: \$6 each or \$10 for both

*Because audience feedback is a crucial component of developing new work, we encourage you to stay for the discussions after each performance.*

**November 13 - 21**

## **The Claire Trevor Show**

*A special collaboration of the Dance, Drama & Music Departments*

### **The Threepenny Opera**

Book and Lyrics by Bertolt Brecht

Music by Kurt Weill

Keith Fowler, director

Dennis Castellano, musical director

Stephen DiSchiavi, choreographer

Claire Trevor Theatre

Evenings / Nov. 13, 14, 18, 19, 20, 21 8:00 p.m.

Matinees / Nov. 15, 21 2:00 p.m.

General Admission \$28 / Seniors \$25 / Children & UCI Students \$12

*The Threepenny Opera* is the jazz masterpiece of Weimar Kultur, a trailblazer of modern musicals. Sometimes referred to as "the greatest musical of all time," *Threepenny* features a finger-snapping score that ranges from lyrical arias and tangos to stirring anthems and bawdy ballads – and the extraordinary "*Mack the Knife*."

**Ticketholders:** please join us on Nov. 19 for a post-performance Talk Back with our cast and creative team.



# Dance



**December 3-5**

## **New Slate**

*New dance works by Claire Trevor School of the Arts graduate choreographers.*

Jodie Gates, artistic director

Winifred Smith Hall

Evenings / Dec. 3, 4 & 5 8:00 p.m.

Matinee / Dec. 5 2:00 p.m.

General Admission \$13 / Seniors \$12 / Children & UCI Students \$9

**February 4-7**

## **Dance Visions**

**with the UCI Symphony Orchestra, directed by Stephen Tucker**

Lisa Naugle, artistic director

Claire Trevor Theatre

Evenings / Feb. 4, 5 & 6 8:00 p.m.

Matinees / Feb. 6 & 7 2:00 p.m.

General Admission \$17 / Seniors \$15 / Children & UCI Students \$9

Professional choreographers from the Claire Trevor School of the Arts dance faculty will present a variety of works to the musical accompaniment of the UCI Symphony Orchestra. Contributing choreographers include Donald McKayle, Molly Lynch, Jodie Gates, Sheron Wray and surprise guests. This annual celebration of dance is a must-see for dance aficionados.

**Tickets and Information:** UCI Arts Box Office (949) 824-2787

**April 22-24**

## **Dance Escape**

*New works by Claire Trevor School of the Arts graduate choreographers.*

Sheron Wray, artistic director

Claire Trevor Theatre

Evenings / April 22, 23 & 24 8:00 p.m.

Matinee / April 24 2:00 p.m.

General Admission \$13 / Seniors \$12 / Children & UCI Students \$9

**May 6-8**

## **Physical Graffiti**

*Original works by Claire Trevor School of the Arts undergraduate choreographers.*

Loretta Livingston, artistic director

Claire Trevor Theatre

Evenings / May 6, 7 & 8 8:00 p.m.

Matinee / May 8 2:00 p.m.

General Admission \$13 / Seniors \$12 / Children & UCI Students \$9



Show your love of Dance with a contribution to our Performance Endowment Fund. Call Mia Martinez, Associate Director of Development, at (949) 824-0085 for details.

# Drama



**October 30 - November 7**

## **The Laramie Project**

*The Laramie Project is as controversial today as it was when it premiered 10 years ago.*

Written by Moisés Kaufman and Members of the Tectonic Theater Project  
Don Hill, director

Studio Theatre

Evenings / Oct. 30, 31, Nov. 3, 4, 5, 6, 7 8:00 p.m.

Matinees / Oct. 31, Nov. 7 2:00 p.m.

General Admission \$18 / Seniors \$16 / Children & UCI Students \$9

A powerful look at the aftermath of the 1998 kidnapping, savage beating and murder of Matthew Shepard, a gay University of Wyoming student. The play draws on hundreds of interviews with Laramie residents conducted by members of the Tectonic Theater Company, members' own journal entries and published news reports.

**Ticketholders:** please join us on Nov. 5 for a post-performance Talk Back with our cast and creative team.

*Your discretion is advised due to adult content or language.*



**Tickets and Information:** UCI Arts Box Office (949) 824-2787

**November 19-22**

## **Escape from Happiness**

*You think your family is wild? Wait until you meet this one and share their humorous and dramatic examination of the complicated bonds that make a family.*

Written by George F. Walker  
Rob Salas, director

Little Theatre  
Evenings / Nov. 19, 20, 21 8:00 p.m.  
Matinees / Nov. 21, 22 2:00 p.m.  
General Admission \$18 / Seniors \$16 /  
Children & UCI Students \$9



Never before performed at UC Irvine, *Escape from Happiness* revolves around a single family in their kitchen. This absurd, hilarious and dark comedy will truly warm your heart.

**Ticketholders:** please join us on Nov. 20 for a post-performance Talk Back with our cast and creative team.

*Your discretion is advised due to adult content or language.*

---

**January 22-30**

## **Blue Light**

*World Premiere of a collaboration by director Annie Loui, Los Angeles video designer Greg Pacificar, award-winning author Michelle Latiolais and a team of Claire Trevor School of the Arts actors, designers and stage managers.*

Written by Michelle Latiolais  
Annie Loui, director

Studio Theatre  
Evenings / Jan. 22, 23, 27, 28, 29, 30 8:00 p.m.  
Matinees / Jan. 23, 30 2:00 p.m.  
General Admission \$18 / Seniors \$16 / Children & UCI Students \$9

In Orange County's Silverado Canyon lies the abandoned Blue Light Silver Mine. Rich in silver and in local lore, it has long drawn the hearts of miners and adventurers alike, and now it calls to you.

**Ticketholders:** please join us on Jan. 27 for a post-performance Talk Back with our cast and creative team.

*Your discretion is advised due to adult content or language.*





**April 9 - April 17**

## **Cymbeline**

*This rarely performed treasure takes us to a land of death and rebirth, where miracles can happen in front of our very own eyes.*

Written by William Shakespeare  
Beth Lopes, director

Studio Theatre  
Evenings / April 9, 10 14, 15, 16, 17 8:00 p.m.  
Matinees / April 10, 17 2:00 p.m.  
General Admission \$18 / Seniors \$16 / Children & UCI Students \$9

One of Shakespeare's most complex and interesting works is coming to a UC Irvine stage for the first time! We follow a group of parents, lovers and lost siblings that are, like us, hopeful, ambitious and majorly flawed.

**Ticketholders:** please join us on April 15 for a post-performance Talk Back with our cast and creative team.

**May 28 - June 5**

## **The Wild Party**

*A blonde. A stranger. A thug. A dimwit. A lesbian. A dancer. A looker. A hooker. A minor. A very scary clown.*

Written by Andrew Lippa  
Dennis Beasley, director  
Daniel Gary Busby, musical director

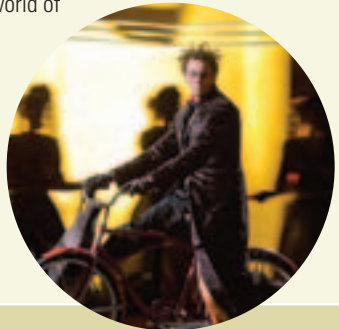
Claire Trevor Theatre  
Evenings / May 28, 29, June 2, 3, 4, 5 8:00 p.m.  
Matinees / May 29, 2:00 p.m. June 5, 1:00 p.m.  
General Admission \$18 / Seniors \$16 / Children & UCI Students \$9

In this Claire Trevor School of the Arts premiere, everyone has excess time and money to spend, an "I want more" attitude and devil-may-care behavior. Andrew Lippa shows us what happens when all of these characters collide at the party-to-end-all-parties.

*The Wild Party* spins us into a world of power, control, consumption, sexuality and violence.

**Ticketholders:** please join us on June 3 for a post-performance Talk Back with our cast and creative team.

*Your discretion is advised due to adult content or language.*



**Theatre Guild Members:** Attend the Pre-Performance Discussions with each show's creative team on Nov. 19, Jan. 28, March 11 & June 3.

**Want to join our Theatre Guild and help support our Drama Department?** Call Barbara at (949) 824-6905 for details.

# Music



**October 10**

Chamber Series

## **New Music Encounters with The Eclipse Quartet**

Sara Parkins & Sarah Thornblade, violin

Alma Lisa Fernandez, viola

Maggie Parkins, violoncello

Winifred Smith Hall 8:00 p.m.

General Admission \$14 / Seniors \$12 / Children & UCI Students \$9

**October 24**

Chamber Series

## **October Chamber Fest**

*Featuring works by Poulenc, Francaix, Villa-Lobos, Roseman and others.*

Alan Terricciano, piano

Patti Cloud, flute

Jonathan Davis, oboe

Amanda Walker, clarinet

Elliott Moreau, bassoon

David Washburn, trumpet

David Stetson, trombone

Matt Hare, double bass

Winifred Smith Hall 8:00 p.m.

General Admission \$14 / Seniors \$12 / Children & UCI Students \$9

**October 30 & 31**

## **UCI Symphony Orchestra**

Stephen Tucker, director

Irvine Barclay Theatre 8:00 p.m.

General Admission \$14 / Seniors \$12 / Children & UCI Students \$9

Pre-concert conversation Oct. 30 at 7:00 p.m.

**Tickets and Information:** UCI Arts Box Office (949) 824-2787

## **November 7**

Chamber Series

### **English Viola Favorites**

Jerzy Kosmala, viola

Lorna Griffitt, piano

Winifred Smith Hall 8:00 p.m.

General Admission \$14 / Seniors \$12 / Children & UCI Students \$9

## **November 18**

### **Gassmann Electronic Music Series**

*2009 Grammy winner Gloria Cheng performs new works for piano and electro-acoustic sound.*

Winifred Smith Hall 8:00 p.m. Free admission

## **November 30**

### **UCI Wind Ensemble**

Kevin McKeown, director

Claire Trevor Theatre 8:00 p.m. Free admission

## **December 2**

### **UCI Jazz Orchestra**

Charles Owens, director

Claire Trevor Theatre 8:00 p.m.

General Admission \$14 / Seniors \$12 / Children & UCI Students \$9

## **December 4 & 5**

### **UCI Symphony Orchestra**

Stephen Tucker, director

Claire Trevor Theatre 8:00 p.m.

General Admission \$14 / Seniors \$12 / Children & UCI Students \$9

Pre-concert conversation Dec. 4 at 7:00 p.m.

## **December 13**

### **Gassmann Electronic Music Series**

*Telematic performance of original computer-mediated chamber music. Part of 2009 Conference on Digital Art & Culture and funded in part with a grant from the Intel/UCI People and Practices Research Initiative.*

Michael Dessen, Christopher Dobrian, Mark Dresser & Friends

Winifred Smith Hall 8:00 p.m. Free admission

**January 22 & 23**

Chamber Series

## **An Evening of Jazz with Kei Akagi & Friends**

Winifred Smith Hall 8:00 p.m.

General Admission \$14 / Seniors \$12 / Children & UCI Students \$9

**February 13**

Chamber Series

## **An Evening of Beethoven and Mendelssohn**

*The monumental Archduke Trio by Ludwig van Beethoven is followed by Felix Mendelssohn's scintillating and vivacious Octet for Strings.*

Haroutune Bedelian, violin

Maggie Parkins, cello

Jerzy Kosmala, viola

Lorna Griffitt, piano

Outstanding Music Department Students

Winifred Smith Hall 8:00 p.m.

General Admission \$14 / Seniors \$12 / Children & UCI Students \$9

**February 14**

## **16th Annual Valentine's Celebration: Men in Blaque & UCI A cappella**

Joseph Huszti, director

*Reception follows this traditional concert.*

Winifred Smith Hall 8:00 p.m.

General Admission \$14 / Seniors \$12 / Children & UCI Students \$9

**February 17**

## **Gassmann Electronic Music Series**

*The Mauger Trio, innovators of contemporary jazz, provide an evening of extraordinary music.*

Mauger Trio:

Rudresh Mahanthappa, saxophone

Mark Dresser, bass

Gerry Hemingway, percussion

and electronics

Winifred Smith Hall

8:00 p.m. Free admission



**Tickets and Information:** UCI Arts Box Office (949) 824-2787



### **March 1**

## **UCI Wind Ensemble**

Kevin McKeown, director

Winifred Smith Hall 8:00 p.m. Free admission

### **March 2**

## **UCI Jazz Orchestra**

Charles Owens, director

Claire Trevor Theatre 8:00 p.m.

General Admission \$14 / Seniors \$12 / Children & UCI Students \$9

### **March 6**

Chamber Series

## **Loneliness of Dust**

*A telematic performance featuring traditional Persian music fused with electronic music.*

The concert takes place in two remote locations – acoustic performance at UC Irvine and live electronics at UC San Diego connected with high-fidelity audio and video streams. Audiences in both locations will experience similar sonic worlds, and each stage will be projected to the other location.

Hossein Omoumi, ney and vocals

Shahrokh Yadegari, live electronics

Winifred Smith Hall 8:00 p.m.

General Admission \$14 / Seniors \$12 / Children & UCI Students \$9

### **March 7**

## **UCI Choir & Men in Blaque**

Joseph Huszti, director

Winifred Smith Hall 8:00 p.m.

General Admission \$14 / Seniors \$12 / Children & UCI Students \$9

### **March 12 & 13**

## **UCI Symphony Orchestra**

Stephen Tucker, director

Claire Trevor Theatre 8:00 p.m.

General Admission \$14 / Seniors \$12 / Children & UCI Students \$9

Pre-concert conversation March 12 at 7:00 p.m.



**April 17**

Chamber Series

## **The Czar's Guitars: Souvenirs of Russia**

*The East-meets-West-themed program includes Russian music by European composers and European music by Russian composers performed on a spectacular collection of guitars from the 19th Century.*

Oleg Timofeyev & John Schneiderman, Russian & Spanish guitars

Winifred Smith Hall 8:00 p.m.

General Admission \$14 / Seniors \$12 / Children & UCI Students \$9

**April 21**

## **Gassmann Electronic Music Series**

*Metal Music Machine composed by rock legend Lou Reed, performed by California E.A.R. Unit, arranged by Ulrich Krieger.*

Winifred Smith Hall 8:00 p.m. Free admission

**April 30 & May 1**

## **UCI Symphony Orchestra**

Stephen Tucker, director

Irvine Barclay Theatre 8:00 p.m.

General Admission \$14 / Seniors \$12 / Children & UCI Students \$9

Pre-concert conversation April 30 at 7:00 p.m.

**May 8**

Chamber Series

## **Darryl Taylor & Brent McMunn: iSing**

Darryl Taylor, countertenor

Brent McMunn, piano

*An evening of favorite works alongside new ones, underscoring the vitality of the countertenor voice.*

Winifred Smith Hall 8:00 p.m.

General Admission \$14 / Seniors \$12 / Children & UCI Students \$9

**May 12**

## **UCI Jazz Orchestra**

Charles Owens, director

Claire Trevor Theatre 8:00 p.m.

General Admission \$14 / Seniors \$12 / Children & UCI Students \$9

**Tickets and Information:** UCI Arts Box Office (949) 824-2787

**May 13**

## **Integrated Composition, Improvisation and Technology Concert**

*Graduate students in the Department's newest MFA program perform original works.*

Winifred Smith Hall 8:00 p.m. Free admission

---

**May 15**

## **UCI Choir Concert**

Joseph Huszti, director

St. Nicholas by Benjamin Britten tells the colorful story of St. Nicholas as he reflects on his life of miracles and martyrdom.

Winifred Smith Hall 8:00 p.m. Free admission

---

**May 18**

## **Small Jazz Groups**

Winifred Smith Hall 8:00 p.m. Free admission

---

**May 26**

## **UCI Wind Ensemble**

Kevin McKeown, director

Winifred Smith Hall 8:00 p.m. Free admission.

---

**May 29**

## **Men in Blaque Sing Broadway Classics**

Joseph Huszti, director

*Time-honored songs from Hello Dolly, South Pacific, Showboat & more.*

Winifred Smith Hall 8:00 p.m.

General Admission \$14 / Seniors \$12 / Children & UCI Students \$9

---

**June 4 & 5**

## **UCI Symphony Orchestra**

Stephen Tucker, director

Winifred Smith Hall 8:00 p.m.

General Admission \$14 / Seniors \$12 / Children & UCI Students \$9

Pre-concert conversation at 7:00 p.m.

**Become a Patron of the Arts with a contribution to our Performance Endowment Fund.** Call Mia Martinez, Associate Director of Development, at (949) 824-0085 for more information.





## January 7 - February 6

University Art Gallery

### VIDEO DADA

Curated by Martha Gever, Studio Art Associate Professor/UCI

Opening Reception: January 7 6:00 – 9:00 p.m.

A collection of more than 250 inventive, intelligent, and aesthetically sophisticated videos by individual artists and art collectives playing on seven screens. Some fiddle with music; some incorporate extraordinary written or spoken texts; some prefer silence and all the noise it offers. In sum, VIDEO DADA surveys the Internet's amalgamation of popular culture and art, calling into question the difference between the two.

## January 7 – February 6

### Emerging Artist Series

Room Gallery

### A Solo Project by Dawit Petros

Opening Reception: January 7 6:00 – 9:00 p.m.

Dawit Petros' semi-autobiographical artworks investigate the confluence of place and subjectivity through the lens of modernist aesthetics inspired by Adrian Piper, Vito Acconci and Sol LeWitt. Drawing upon his impressions of emigrating from the small East African country of Eritrea to the United States by way of Saskatchewan, Canada, Petros balances the complex histories of Western Aesthetics and Global Diaspora – two *corpuses* typically opposed – in a poetic and philosophic manner.

## STUDENT EXHIBITIONS

**December 3 – 11**

**Senior Exhibition**

UAG & Room

**February 18 - March 5**

**Second Year MFA Review**

UAG & Room

**March 11 - March 19**

**Senior Exhibition**

UAG & Room

**April 1 - April 16**

**Sixth Annual Guest Juried Undergraduate Exhibition**

UAG

**April 1 - April 16**

**Undergraduate Honors Project**

Room

**April 21 – April 30**

**MFA Thesis Exhibition, Part I**

UAG & Room

**May 6 - May 14**

**MFA Thesis Exhibition, Part II**

UAG & Room

**May 20 - May 28**

**MFA Thesis Exhibition, Part III**

UAG & Room

**June 3 - June 11**

**Senior Exhibition**

UAG & Room

**University Art Gallery**, Building 712  
**Room Gallery**, Building 727,  
Room 1200

(949) 824-9854  
[www.ucigallery.com](http://www.ucigallery.com)

The public is welcome to all exhibitions and Opening Receptions. Admission is free. Titles and dates are subject to change. Check web site for hours and holiday closings.

# Beall Center for Art + Technology



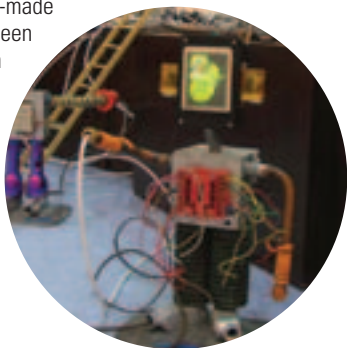
**October 1 – December 5**

## **Foundations of New Media Arts: Nam June Paik**

Opening Reception: Oct. 1 6:30 p.m. – 9:00 p.m.

Family Day: Nov. 14 11:00 a.m. – 3:00 p.m.

Internationally renowned artist Nam June Paik played a pivotal role in introducing artists and audiences to the possibilities of using video for artistic expression. The Korean-born artist's first video sculptures were exhibited in the early '60s and used TV sets as sculptural forms and a custom-made synthesizer to create images seen on the screens. This exhibition highlights works done toward the end of his life, including the rarely seen work "Gulliver" (2001).



**Tickets and Information:** UCI Arts Box Office (949) 824-2787

**January 5 – May 7**

***Emergence***

Curated by David Familian and Simon Penny

Opening Reception: Jan. 7 6:30 p.m. – 9:00 p.m.

Family Day: April 17 11:00 a.m. – 3:00 p.m.

*Emergence* features international artists exploring the biological and computational manifestations of emergent behavior. These dynamically changing, interactive sculptures illustrate the rich variety of mutating systems and their ability to adapt to a changing world.

---

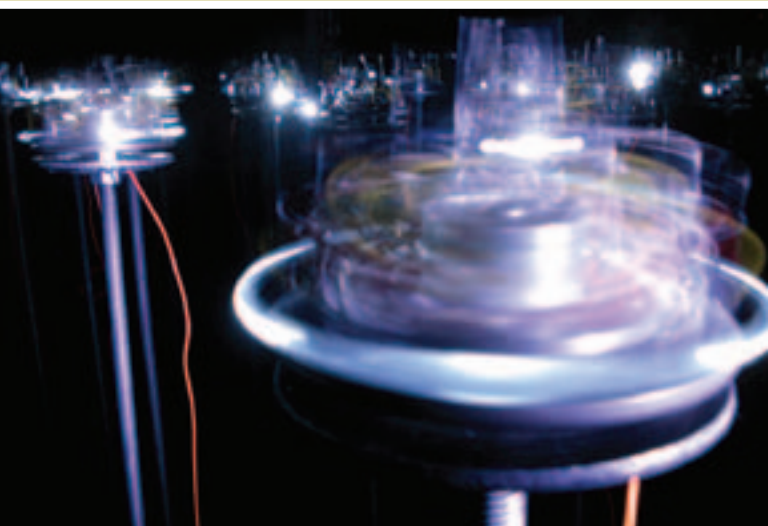
**Beall Center for Art + Technology**

(949) 824-4339

[www.beallcenter.uci.edu](http://www.beallcenter.uci.edu)

The public is welcome to all exhibitions, Opening Receptions and Family Days. Admission is free.

Titles and dates are subject to change. Check web site for hours and holiday closings.



**Become a Patron of the Arts by sponsoring a Beall Center or Gallery exhibition!** Please call Mia Martinez, Associate Director of Development, at (949) 824-0085 for details.

# CLAIRE TREVOR SCHOOL OF THE ARTS

## Season at a Glance

DATES	EVENT	VENUE
<b>September</b>		
18 – 20	New Musical Theatre Festival	WSH
<b>October</b>		
1 – Dec. 5*	Foundations of New Media Arts: Nam June Paik	BC
1 – Nov. 21*	1968: el culo te abrocho by Roberto Jacoby	UAG
1 – Nov. 7*	A Solo Project by D'Ette Nogle	R
10	New Music Encounters with The Eclipse Quartet	WSH
24	October Chamber Fest	WSH
30 – Nov. 7	The Laramie Project	ST
30 & 31	UCI Symphony Orchestra	IBT
<b>November</b>		
7	English Viola Favorites	WSH
13 – 21	The Threepenny Opera	CTT
18*	Gassmann Electronic Music Series	WSH
19 – 22	Escape from Happiness	LT
30*	UCI Wind Ensemble	CTT
<b>December</b>		
2	UCI Jazz Orchestra	CTT
3 – 11*	Senior Art Exhibition	UAG/R
3 – 5	New Slate	WSH
4 & 5	UCI Symphony Orchestra	CTT
13*	Gassmann Electronic Music Series	WSH
<b>January</b>		
5 – May 7*	Emergence	BC
7 – Feb. 6*	VIDEO DADA	UAG
7 – Feb. 6*	A Solo Project by Dawit Petros	R
22 & 23	An Evening of Jazz with Kei Akagi & Friends	WSH
22 – 30	Blue Light	ST
<b>February</b>		
4 – 7	Dance Visions with UCI Symphony Orchestra	CTT
13	An Evening of Beethoven and Mendelssohn	WSH
14	Men in Blaque & UCI A cappella Valentine's Concert	WSH
17*	Gassmann Electronic Music Series	WSH
18 – Mar. 5*	Second Year MFA Review	UAG/R
26 – Mar. 6	Cyrano de Bergerac	ST

## March

1*	UCI Wind Ensemble	WSH
2	UCI Jazz Orchestra	CTT
6	Loneliness of Dust	WSH
7	UCI Choir & Men in Blaque	WSH
11 – 14	Herbert Siguenza Project	LT
11 – 19*	Senior Art Exhibition	UAG/R
12 & 13	UCI Symphony Orchestra	CTT

## April

1 – 16*	Sixth Annual Guest Juried Undergraduate Art Exhibition	UAG
1 – 16*	Art Undergraduate Honors Project	R
9 – 17	Cymbeline	ST
17	The Czar's Guitars: Souvenirs of Russia	WSH
21*	Gassmann Electronic Music Series	WSH
21 – 30*	MFA Thesis Exhibition, Part I	UAG/R
22 – 24	Dance Escape	CTT
30 & May 1	UCI Symphony Orchestra	IBT

## May

6 – 8	Physical Graffiti	CTT
6 – 14*	MFA Thesis Exhibition, Part II	UAG/R
8	Darryl Taylor & Brent McMunn: iSing	WSH
12	UCI Jazz Orchestra	CTT
13*	Integrated Composition, Improvisation and Technology Concert	WSH
15*	UCI Choir Concert	WSH
18*	Small Jazz Groups	WSH
20 – 28*	MFA Thesis Exhibition, Part III	UAG/R
26*	UCI Wind Ensemble	WSH
28 – June 5	The Wild Party	CTT
29	Men in Blaque Sing Broadway Classics	WSH

## June

3 – 11*	Senior Art Exhibition	UAG/R
4 & 5	UCI Symphony Orchestra	WSH

**Dates & venues are subject to change. Please check our web site [www.arts.uci.edu/events](http://www.arts.uci.edu/events) for the most current information.**

### Venues:

**BC** – Beall Center

**CTT** – Claire Trevor Theatre

**IBT** – Irvine Barclay Theatre

**LT** – Little Theatre

**R** – Room Gallery

**ST** – Studio Theatre

**UAG** – University Art Gallery

**WSH** – Winifred Smith Hall

*\*Denotes free event; no tickets or reservations required.*



**1** Irvine Barclay Theatre  
**601** Little Theatre  
**710** Winifred Smith Hall  
**711** Claire Trevor Theatre  
**712** Beall Center for Art & Technology, University Art Gallery, Cyber A Cafe

**713** Studio Theatre  
**715** UCI Arts Box Office  
**728** Performance Studios  
**PS4** IBT Parking Structure  
**MS** Mesa Parking Structure  
**7** Parking Lot



## Directions

**From North:**  
 Take the 405 S to 73 S  
 Exit University Drive  
 Left on University Drive S  
 At 4th stop light, turn right on Mesa Road  
 Right at first stop sign into the Mesa Parking Structure

**From South:**  
 405 N  
 Left on University Drive  
 Left on Mesa Road, which is the first signal past Campus Drive  
 Turn right at stop sign into Mesa Parking Structure

## Parking: \$8

Park on any level. Go to Level 3 for pedestrian bridge (next to the elevator).  
 Walk across bridge to access theatres and galleries.

# 2009-2010

## SEASON TICKETS

Why See Just One Show When You  
Can See Them All – For Less?

### Dance Series

\$46 for all 4 events

All Series selections must be for the same day of the week and time.

### Drama Series

\$65 - \$121, depending on  
option selected

All Series selections must be for the same day of the week and time.

### Options include:

Claire Trevor Show PLUS 3 additional shows	\$ 65
Claire Trevor Show PLUS 4 additional shows	\$ 79
Claire Trevor Show PLUS 5 additional shows	\$ 93
Claire Trevor Show PLUS 6 additional shows	\$107
Claire Trevor Show PLUS 7 additional shows	\$121

\*Please note that *The Threepenny Opera* & *Escape From Happiness* cannot be purchased together on 11/19 because of conflicting show times.

### Chamber Series

\$88 for all 8 concerts

In addition to other Chamber concerts, Series includes Sat., Jan. 23 performance of Kei Akagi & Friends.

All concerts begin at 8:00 p.m.

### Jazz Series

\$44 for all 4 concerts

In addition to other Jazz concerts, Series includes Fri., Jan. 22 performance of Kei Akagi & Friends.

All concerts begin at 8:00 p.m.

### Symphony Series

\$55 for all 5 concerts

All Series selections must be for the same day of the week.

All concerts begin at 8:00 p.m.

### Sampler Series

Select 4 or Try Them All!

Tickets to any 4 or more events may be purchased at the Discounted Senior Rate. Days of the week and times of performances can vary.

# To Purchase Tickets

# Tickets

## **By Mail:**

Complete form & mail to:  
UCI Arts Box Office  
University of California, Irvine  
Irvine, CA 92697-2775

## **By Phone:**

Call Box Office  
(949) 824-2787  
Visa & MasterCard accepted.

## **By Fax:**

Complete form & fax to:  
(949) 824-2450  
ATTN: Box Office

## **In Person:**

UCI Arts Box Office  
Mon. & Tues. 10:00 a.m. – 5:00 p.m.  
Wed. – Fri. noon – 4:00 p.m.  
Opens 1 hr. before showtime.

## **Online:**

[www.arts.uci.edu/events](http://www.arts.uci.edu/events)

Sorry, no refunds or exchanges.

## **Please Note:**

- Children under five are not admitted to performances.
- Discretion is advised at some performances due to adult language or content.
- Student ticket prices good for UCI students only and children under 18. ID required.
- Please arrive early as performances start promptly & some prohibit late seating.
- General & handicapped parking available in Mesa Parking Structure on Mesa Road & in Parking Structure 4 for the Irvine Barclay Theatre.
- Individuals with special needs, please call the Box Office (949) 824-2787 for assistance.



# Ticket Order Form

**Give the Gift of Entertainment!**

Gift cards available at [www.arts.uci.edu/giftcards](http://www.arts.uci.edu/giftcards)

Name \_\_\_\_\_

Mailing Address \_\_\_\_\_

City/State \_\_\_\_\_ Zip \_\_\_\_\_

Telephone \_\_\_\_\_

Email \_\_\_\_\_

Please print clearly.

Event	Day	Time	#Tickets x Price = Total

**Performance Endowment Donation**

Help provide student scholarships & support our professional quality performances & exhibits. Private support is essential to our students and will assist them in achieving their academic goals. Call (949) 824-0085 for more information.

Donation Amount:	\$
Service Fee:	\$3.00
<b>TOTAL:</b>	

**Payment Information**

Please Indicate Payment Method – DO NOT SEND CASH!

Check enclosed                       Visa                       MasterCard   
(payable to UC Regents)

Credit Card # \_\_\_\_\_

Expiration Date \_\_\_\_\_

Signature \_\_\_\_\_  
(as it appears on the card)

# UCLA Arts

Claire Trevor School of the Arts

University of California, Irvine  
Claire Trevor School of the Arts  
200 MAB  
Irvine, CA 92697-2775

18

Non-Profit Org.  
U.S. Postage

**PAID**

Santa Ana, CA.  
Permit No. 1106

